



Powered by National PTA

About ▾

Find a Program ▾

Take Action ▾

Contact ▾



Welcome to Family Engagement Solutions

We offer administrators, educators and advocates detailed information and resources on family engagement programs that have been vetted by National PTA and our expert partners.

[FIND A PROGRAM](#)

About Family Engagement Solutions



While you're waiting,
explore our site!

National
PTA[®]

everychild.one voice.[®]

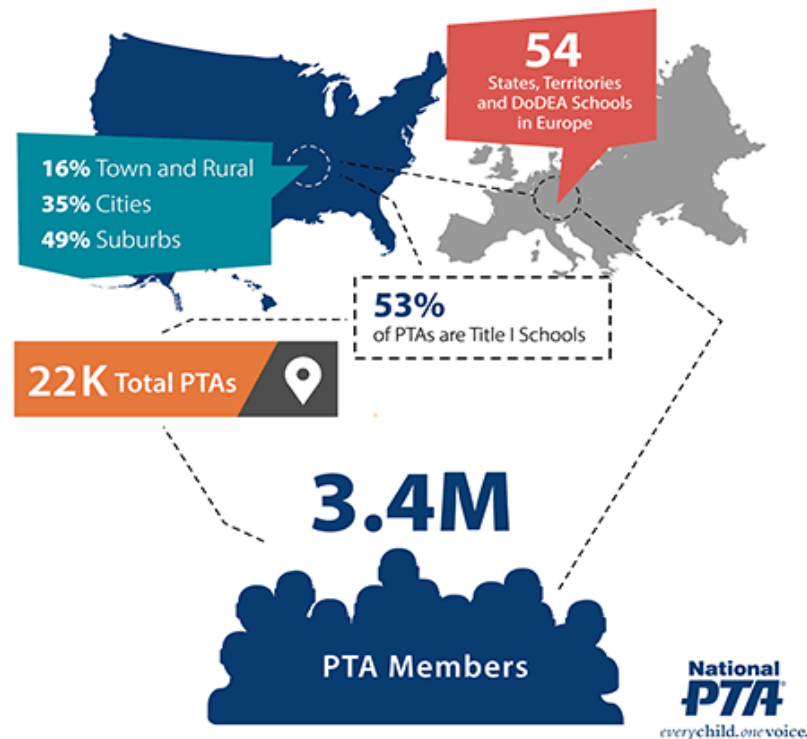
Objectives

- Reflect on the **goals** that drive your PTA's and local context's parent involvement and family engagement.
- Get information to contextualize **how district and school leaders make decisions** about family engagement
- Hear from **evidence-based programs** and explore how your PTA can partner with them to increase your impact.
- Discover **tools** and **resources** to further support your family engagement efforts

PTA's Mission

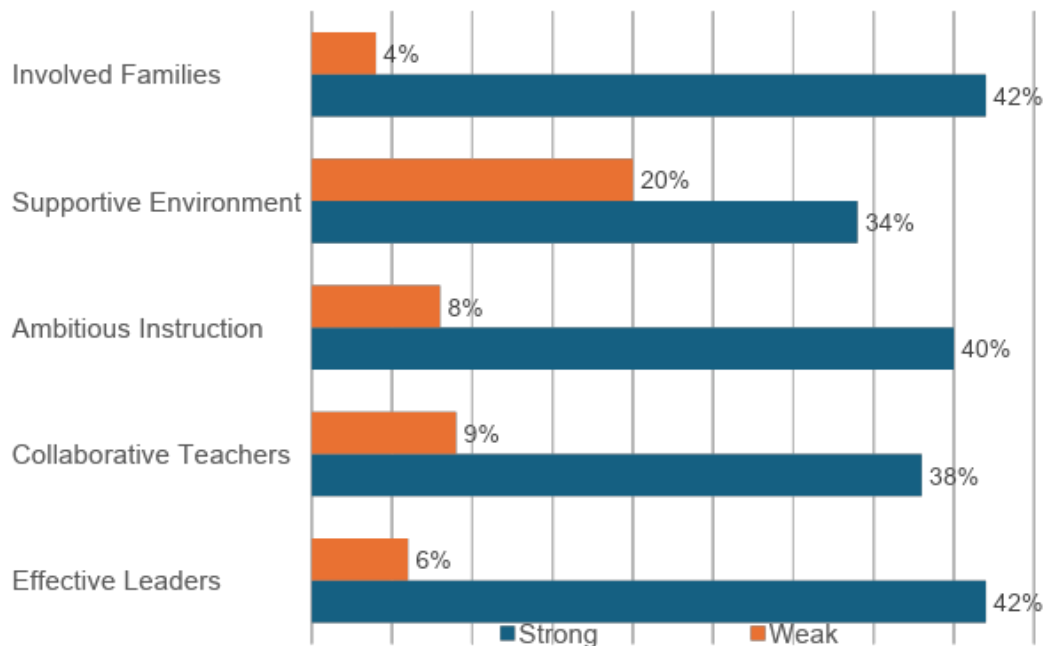
To **make every child's potential a reality** by engaging and empowering families to advocate for all children.

Where We Are



Family Engagement is Essential for Improvement

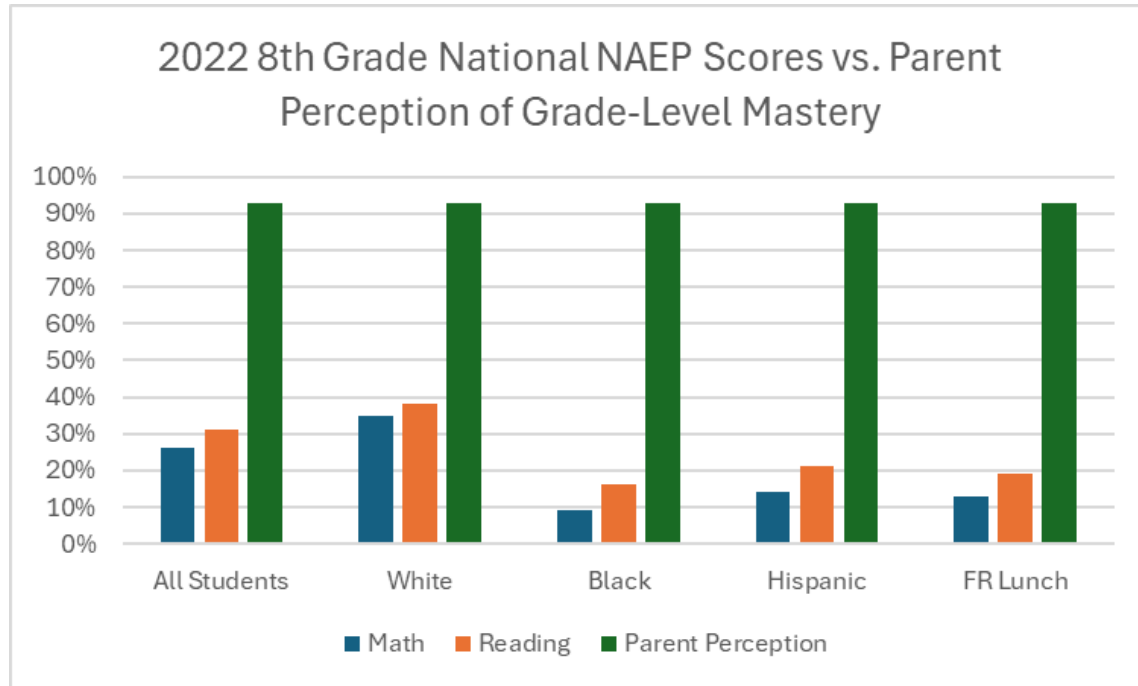
Likelihood of Substantial Improvement In Math



- Strong family engagement was **just as important** in predicting improvement as the other four essentials.
- A school chronically weak at engaging its families **only had a 4% chance** of improvement.

Barriers to Family Engagement

- Despite substantial achievement gaps, families across demographic groups all tend to **overestimate their child's grade-level mastery.**
- All families and schools need to work together to address this **perception gap.**



Let's Talk About Our Goals and Approaches

- What **goals** drive your PTA's approach to family engagement? What about the goals for your school/district/SEA?
- How can your PTA **partner and advocate** with your school/district/SEA to ensure goals and approaches that drive positive kid outcomes?

Principal Outlook on Family Engagement

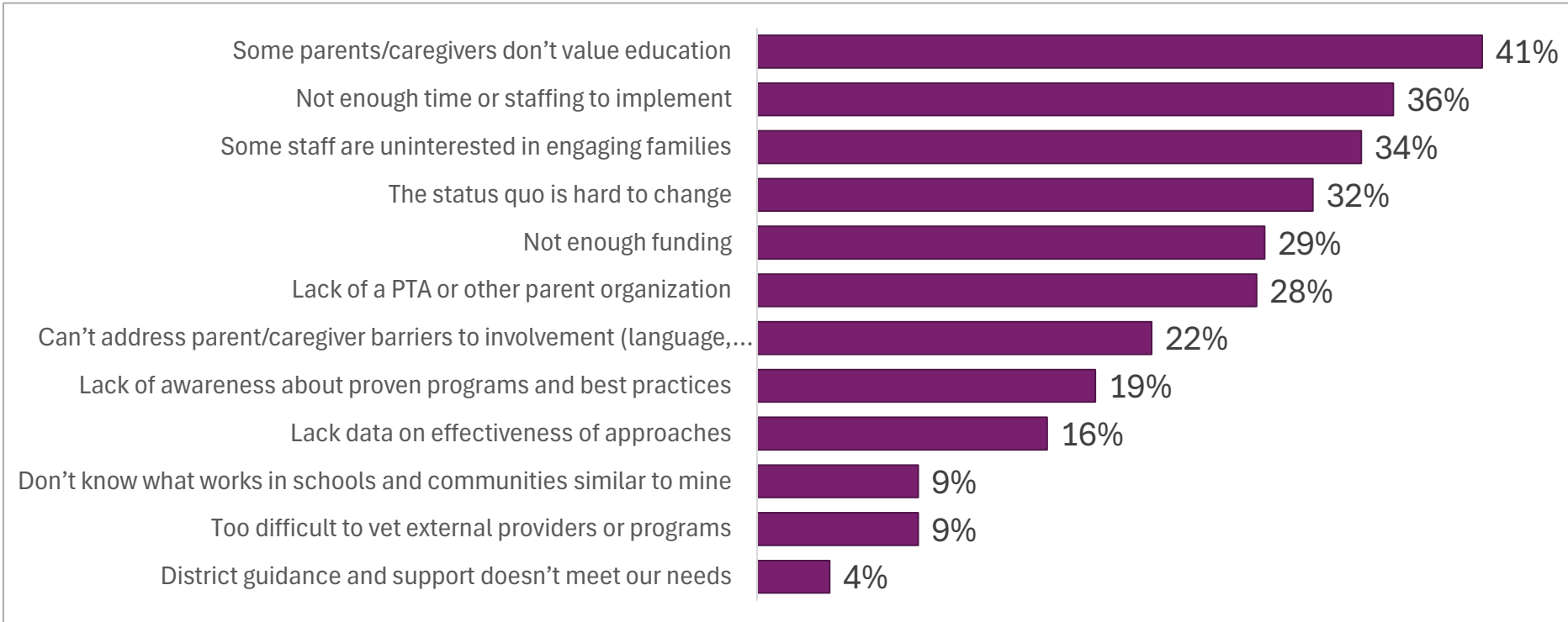
98%

Say it is **very important** that their school engages with families.

78%

Strongly agree or agree that **family engagement is a key strategy** that their school includes in annual improvement plans and budget.

Challenges According to Principals



Cognitive Dissonance Among Principals

Our school is successful at engaging families

7 out of **10**

Confident that our school's family engagement approach is helping improve student outcomes

5 out of **10**

Confident that our school's family engagement approach is reaching the families of students who most need their school's support

3 out of **10**

Strongly agree/Agree

Would like ideas about more impactful ways to spend our school's family engagement budget

78%

Could use more help and guidance on family engagement

72%

What do evidence-based programs provide?

- Confidence in achieving a **certain outcome for a certain population** of students or schools
- Clearer sense of “**must haves**” and “nice to haves” to ensure impact while being adaptable
- Built-in **tools and training** for schools and families that have been vetted and continuously improved

Panel Discussion

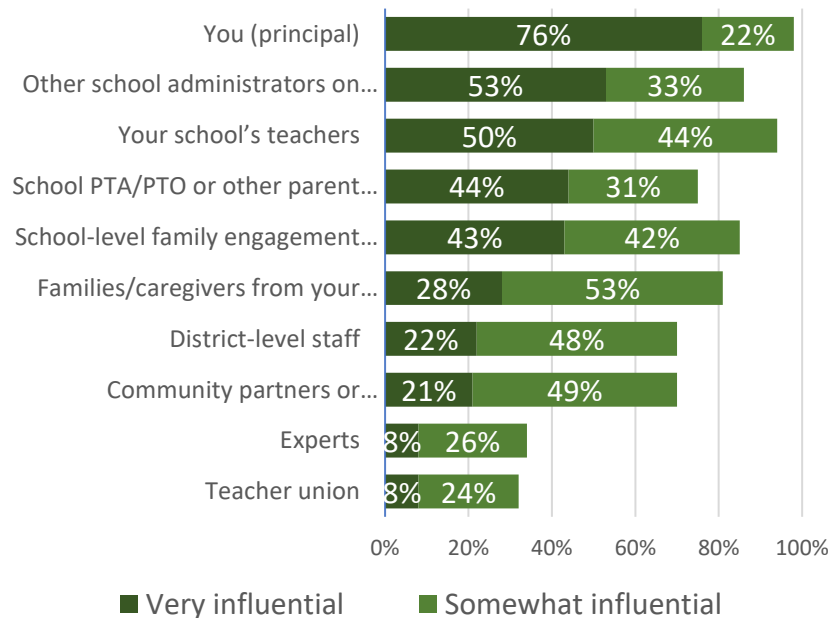


ParentCorps

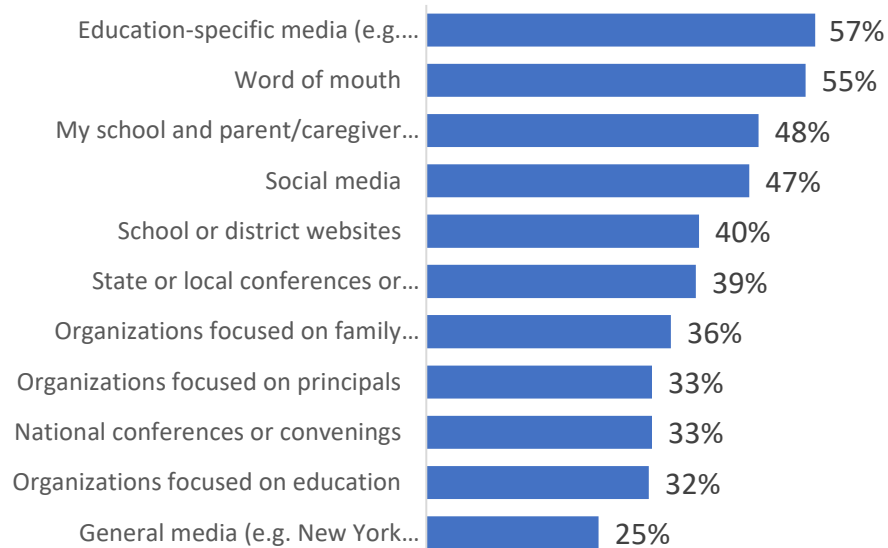


PTAs Can Influence the Solution

Choosing family engagement approach, strategies & programs



Sources of new ideas and information on family engagement




Family Engagement Solutions




- A **FREE** hub for evidence and resources on effective family engagement programs
- Programs reviewed by National PTA and the Center for Research and Reform in Education at Johns Hopkins University and included in www.evidenceforessa.org



Attendance

Essa Rating	No. Studies	No. Students	Average Effect Size
 PROMISING	1	3996	+0.07

Social-Emotional Learning

Essa Rating	No. Studies	No. Students	Average Effect Size
 PROMISING	1	3996	+0.10

Program Description

Parent Teacher Home Visits model was co-created by parents and educators using the community organizing principles of shared leadership. Participating teachers conduct 30-40 minute home visits in which educators listen, ask questions, and make observations that they can take back to their classrooms to improve instruction for the learner. As a two-visit model, PTHV encourages the first relationship-building visit to occur in the summer or early fall, followed by ongoing communication throughout the year and a second visit that focuses on academics or any other relevant issue to the student or family. The PTHV model has five non-negotiables:

- Visits are voluntary and arranged in advance
- Teachers are trained and compensated for visits
- Visits focus on hopes and dreams

Groups Studied

African American
English Learners
Hispanic
Free and Reduced Price Meals ★
Special Education

Communities Studied

Urban

Additional Resources

-  **Key Studies**
-  **National PTA Center for Family Engagement**
-  **Family Engagement Solutions**

Sample Outcomes from Proven Programs

- **24%** fewer absences
- **44%** reduction in chronic absenteeism
- **41%** reduction in high schoolers failure to earn course credit
- **50%** less likely to develop behavioral and emotional problems
- **55%** more likely to score proficient in reading comprehension
- **4.9** additional months of reading growth
- **7.8** additional months of math growth
- **And more!**

More Resources from National PTA

National PTA Public Policy Priorities for the 118th Congress (2023-2024)

National PTA will work with the 118th Congress, House & Senate, House of Representatives and Senate Members, School Boards, and state legislatures to ensure that every child has access to a fair and equitable education.

The complete version of the report is available on public data sites: <https://www.pta.org/policy>. National PTA will continue to advocate for the essential elements of public education to ensure that every child has access to a fair and equitable education.

PTA Calls on Congress and the Administration to Strengthen Family School Partnerships and Invest in Successful Family Engagement

Successful family engagement matters for students across all levels of education. Parents and families have the ability to attend school, assist with homework, volunteer at higher levels and programs. Parents and families have always played an important role in education, and this partnership is essential to ensure that every child has access to a fair and equitable education. Parents and families have the ability to attend school, assist with homework, volunteer at higher levels and programs. Parents and families have always played an important role in education, and this partnership is essential to ensure that every child has access to a fair and equitable education.

PTA Calls on Congress and the Administration to Enhance Federal and Community Safety and Prioritize the Positive Use of Technology and Tools

School safety is a critical priority for all parents, educators, students and community members. Students and educators have a right to attend school that is safe and conducive to learning and achievement, and schools offer opportunities for students, such as sports, school activities or a more casual setting that can have a lasting impact and inspire hope on whole school communities. PTA believes efforts to address school and community safety must involve all stakeholders, especially students, parents and families and urgent consideration of a variety of factors including the physical and psychological safety of students while implementing positive school climate for all children to learn, grow and reach their potential.

Policy and Legislation must:

- Support evidence-informed practices that promote the physical and psychological safety of students while implementing positive school climate for all children to learn, grow and reach their potential.
- Support evidence-informed practices that promote the physical and psychological safety of students while implementing positive school climate for all children to learn, grow and reach their potential.
- Support evidence-informed practices that promote the physical and psychological safety of students while implementing positive school climate for all children to learn, grow and reach their potential.
- Support evidence-informed practices that promote the physical and psychological safety of students while implementing positive school climate for all children to learn, grow and reach their potential.

PTA FOR YOUR CHILD

National
PTA
everychild.onevoice.®

NOTES FROM THE BACKPACK
A PTA Podcast

Listen to Notes from the Backpack

Podcast icons: Apple Podcasts, Spotify, YouTube Music, Amazon Music, TuneIn

www.pta.org/join

National Standards for FAMILY-SCHOOL PARTNERSHIPS

- WELCOME ALL FAMILIES** STANDARD 1
- COMMUNICATE EFFECTIVELY** STANDARD 2
- SUPPORT STUDENT SUCCESS** STANDARD 3
- SPEAK UP FOR EVERY CHILD** STANDARD 4
- SHARE POWER** STANDARD 5
- COLLABORATE WITH COMMUNITY** STANDARD 6

THANK YOU!

**National
PTA**[®]

everychild.onevoice.[®]

familyengagement@pta.org